



PRAIRIE POINT WEST CORPORATE PARK BUILDING A

2176 Diehl Road
Aurora, Illinois 60504



OVERVIEW

A 363,578-square-foot facility, featuring 32' clear height and M-1 zoning. This facility is available now for immediate occupancy.

SPECIFICATIONS

| | |
|------------------------|---------------------|
| Total Building SF: | 363,578 |
| Available Building SF: | 247,360 |
| Building Dimensions: | 1064' x 340' |
| Column Spacing: | 40' x 48' |
| Contiguous Range: | 80,000 - 363,578 SF |
| Dock Levelers: | Mechanical |
| Dock Package: | Rear Load |
| Trailer Parking: | 40 |
| Drive-in Doors: | 2 |
| Fire Sprinkler: | ESFR |
| Office SF: | To Suit |
| Parking: | 333 |
| Slab Thickness: | 7' |
| Truck Court: | 130' |
| Dock(s): | 40 |

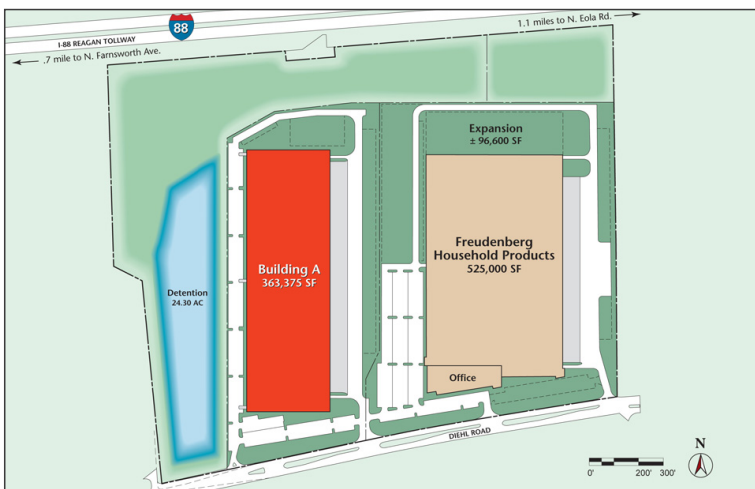
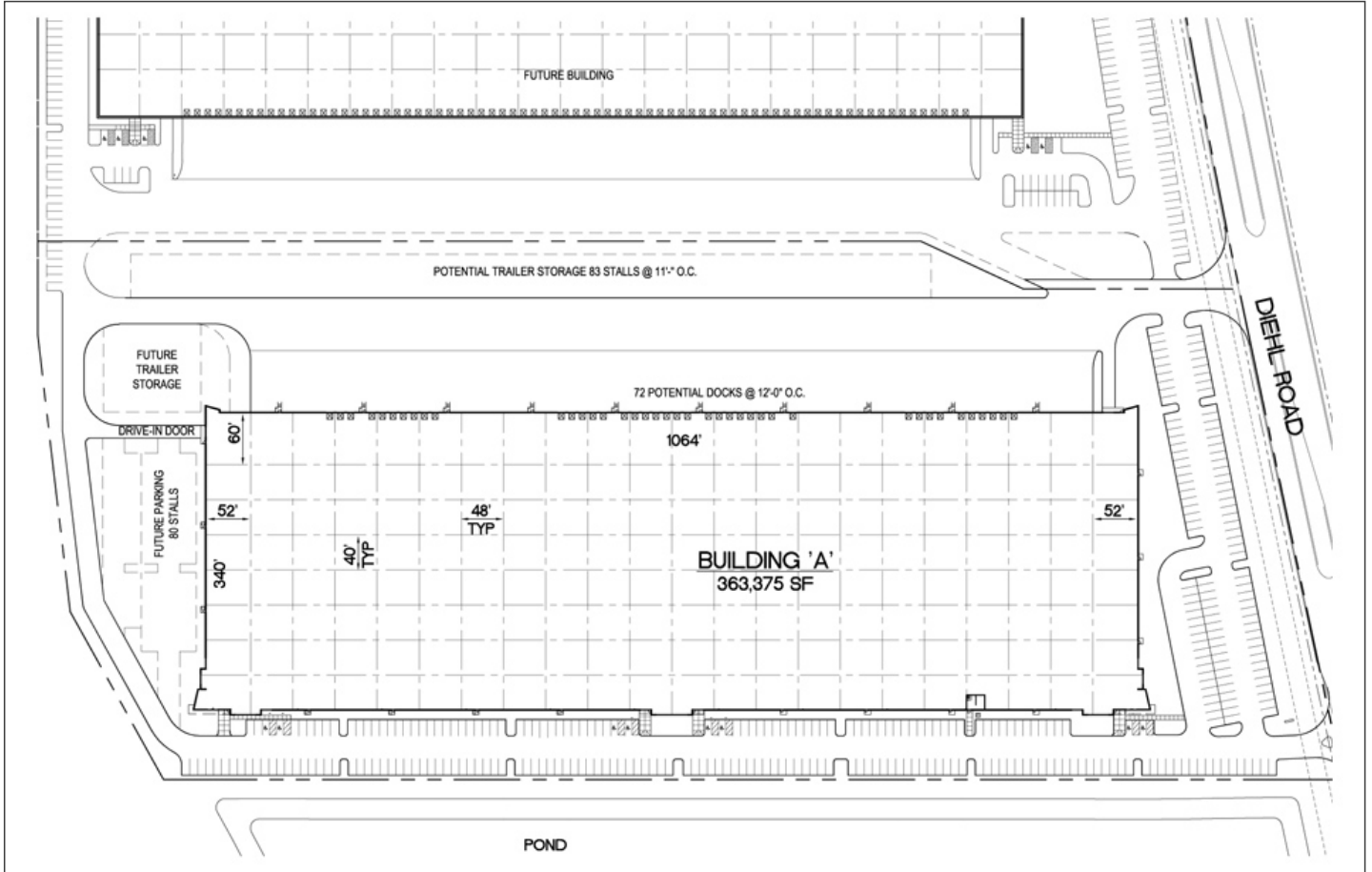


CONTACT

Jeff Lanaghan
IDI Chicago Office
500 Park Boulevard
Suite 750
Itasca, Illinois 60143
630.919.1042
jlanaghan@idi.com

**PRAIRIE POINT WEST CORPORATE PARK
BUILDING A**

2176 Diehl Road
Aurora, Illinois 60504



DIRECTIONS

From I-88, exit Farnsworth south to Molitor Road east to the site.

© 2011 Industrial Developments International, Inc. All rights reserved. All trademarks are the property of their respective companies. While we have no reason to doubt the accuracy of the information provided here, from sources we deem reliable, we regret we cannot guarantee it. All information should be verified by the recipient prior to lease, purchase exchange, or execution of legal documents. We assume no liability for errors, omissions or changes to this content.



Jeff Lanaghan 630.919.1042



David Prell 847-585-0722
Kirk Armour 847-706-4030